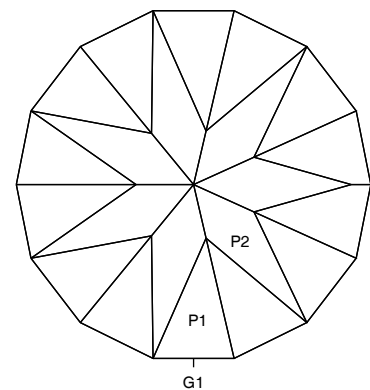
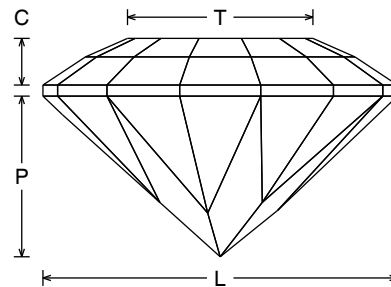
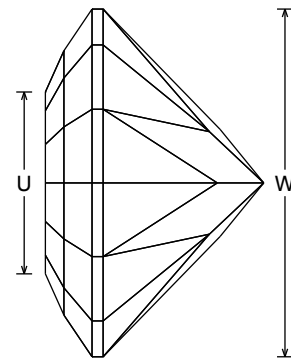
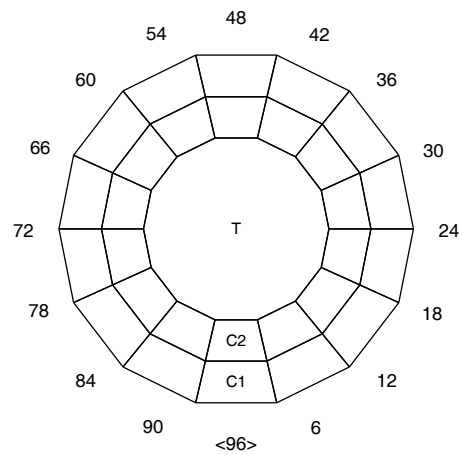


Seven RBS

AIB060

Andrew Brown - June 2019

Design Information	
Pavilion facets	21
Girdle facets	14
Crown facets	28+1
Total facets	64
Index gear	96
Symmetry	1-fold mirror image
RI range	1.54 to 2.16
L/W = 1.020	T/W = 0.533
U/W = 0.523	P/W = 0.462
C/W = 0.134	V/W ³ = 0.221



Pavilion

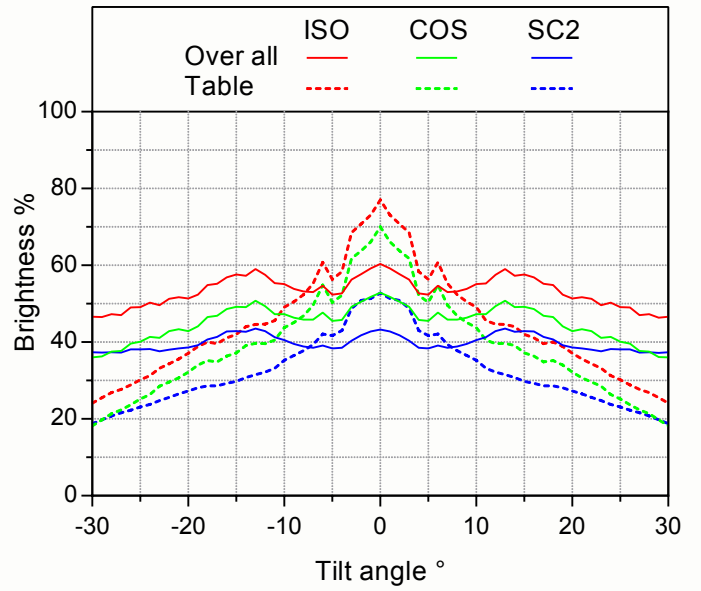
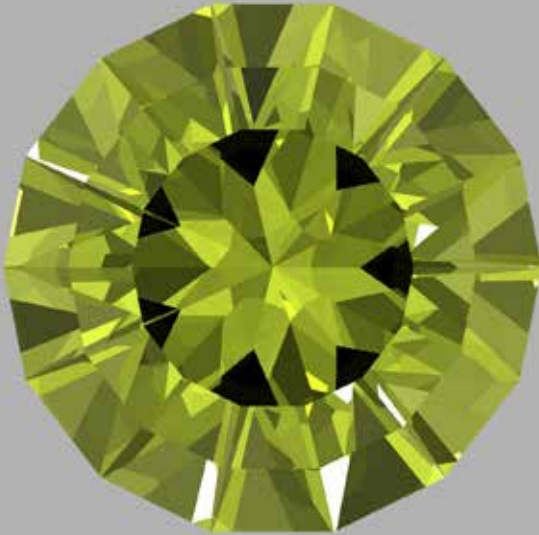
* A = RI 1.54 to 2.16

Facets	A	Index	Instructions
P1	44.20°	96-07-14-21-27-34-41-48-55-62-69-75-82-89	Form a TCP
G1	90.00°	96-07-14-21-27-34-41-48-55-62-69-75-82-89	Set stone size
P2	42.00°	11-24-37-52-65-79-92	Meet G1, P1. Form FCP [Except index 24, meet FCP]

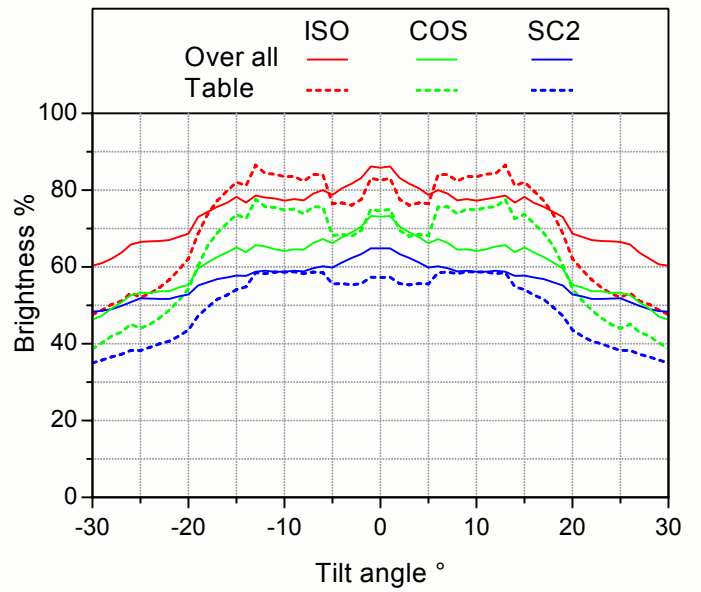
Crown

Facets	A	Index	Instructions
C1	34.00°	96-07-14-21-27-34-41-48-55-62-69-75-82-89	Establish girdle width
C2	24.20°	96-07-14-21-27-34-41-48-55-62-69-75-82-89	Float in C2 as shown in diagram
T	0.00°	Table	Float in table to approximately 53% of width

RI = 1.54



RI = 1.76



RI = 2.16

